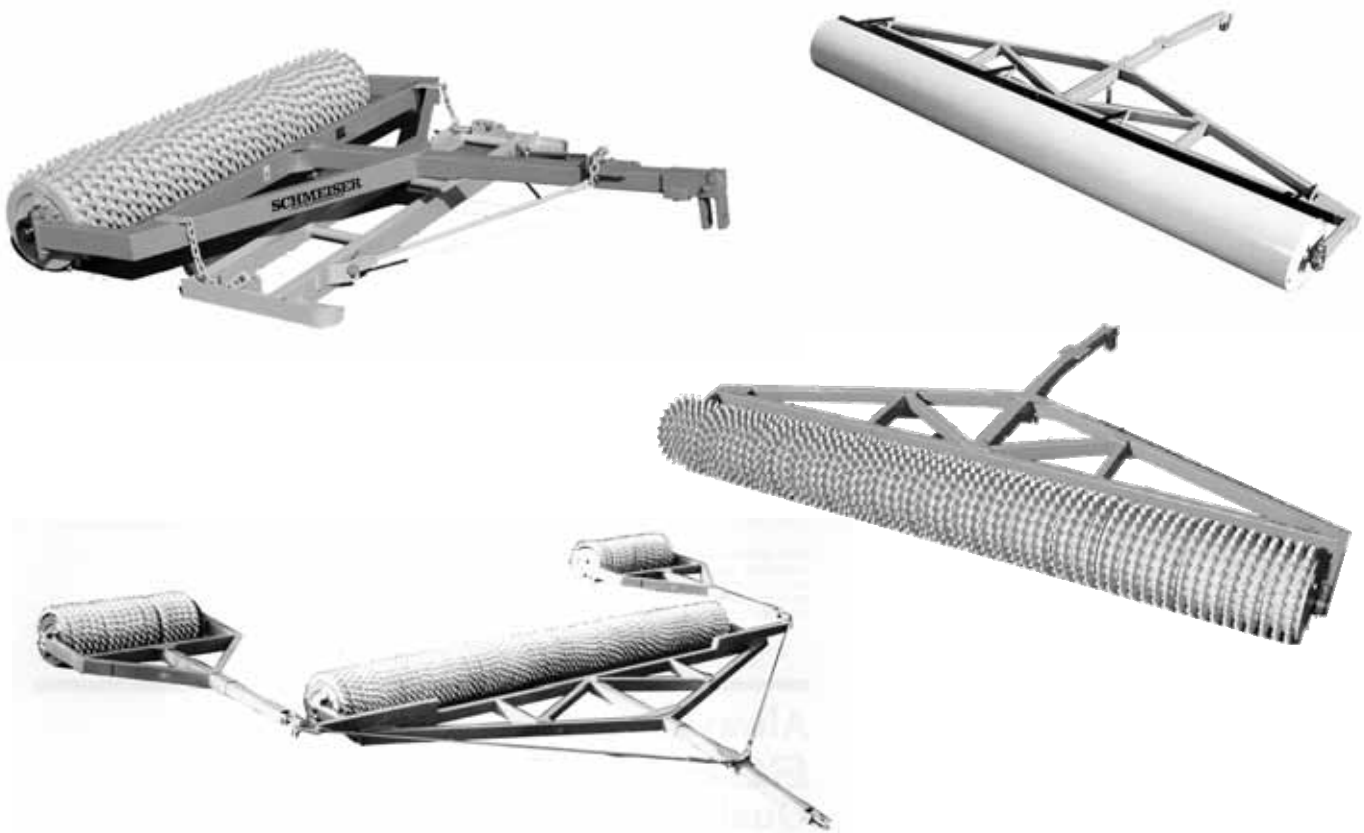


**SCHMEISER®**  
**TILL AN' PAK / SMOOTH AN' ROLL**  
**and**  
**ACCESSORIES**

**ASSEMBLY & PARTS**  
**MANUAL**



**T.G. SCHMEISER CO., INC.**  
**P.O. BOX 1047 FRESNO, CA. 93714**  
**(559) 268-8128 FAX (559) 268-3279**  
**[www.tgschmeiser.com](http://www.tgschmeiser.com)**

**VERSION 1.1**  
**6-2007**

## INTRODUCTION

Your Schmeiser Till An' Pak / Smooth An' Roll is designed to give you many years of dependable service. This manual has been prepared to instruct you in the safe and efficient operation of this machine. Read and study it thoroughly. Follow all instructions carefully.

Should your Till An' Pak / Smooth An' Roll require replacement parts, go to your Schmeiser dealer. Always order genuine Schmeiser replacement parts.

If you need information not contained in this manual, contact your Schmeiser dealer.

Space has been provided below for you to record the model number and serial number of your Till An' Pak / Smooth An' Roll. Be sure to bring this information with you to your dealer when ordering parts for your Till An' Pak / Smooth An' Roll.

Thank you for buying a Schmeiser Till An' Pak / Smooth An' Roll.

SERIAL NUMBER \_\_\_\_\_

MODEL NUMBER \_\_\_\_\_

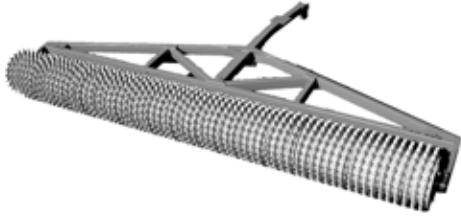
DATE PURCHASED \_\_\_\_\_

DEALER NAME \_\_\_\_\_

# TABLE OF CONTENTS

Introduction .....	2
Table of Contents .....	3
Till An' Pak / Smooth An' Roll and Accessories.....	4
Safety Sheet.....	5
Till An' Pak Assembly.....	6
Till An' Pak Tubes, Rings, and Retainers Chart.....	7
Smooth An' Roll Assembly.....	8
Till An' Pak / Smooth An' Roll Tongues .....	9
Till An' Pak Squadron Arms Assembly.....	10
Till An' Pak Float Assembly.....	11
Till An' Pak 3-Point Hitch Cat. 1 & 2 Assembly.....	12
Till An' Pak 3-Point Hitch Cat. 2 & 3 Assembly.....	13
Limited Warranty.....	14
Maintenance and Repair Record.....	15
Notes.....	16

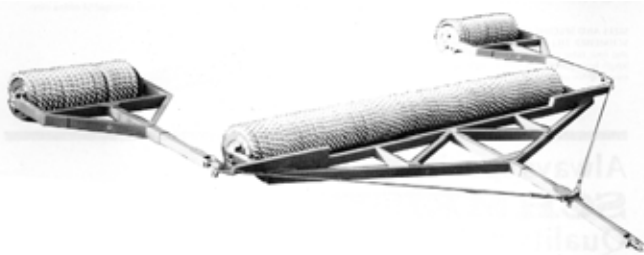
# SCHMEISER<sup>®</sup> TILL AN' PAK / SMOOTH AN' ROLL and ACCESSORIES



**TILL AN' PAK**



**SMOOTH AN' ROLL**



**SQUADRON ARMS**



**TILL AN' PAK FLOAT**



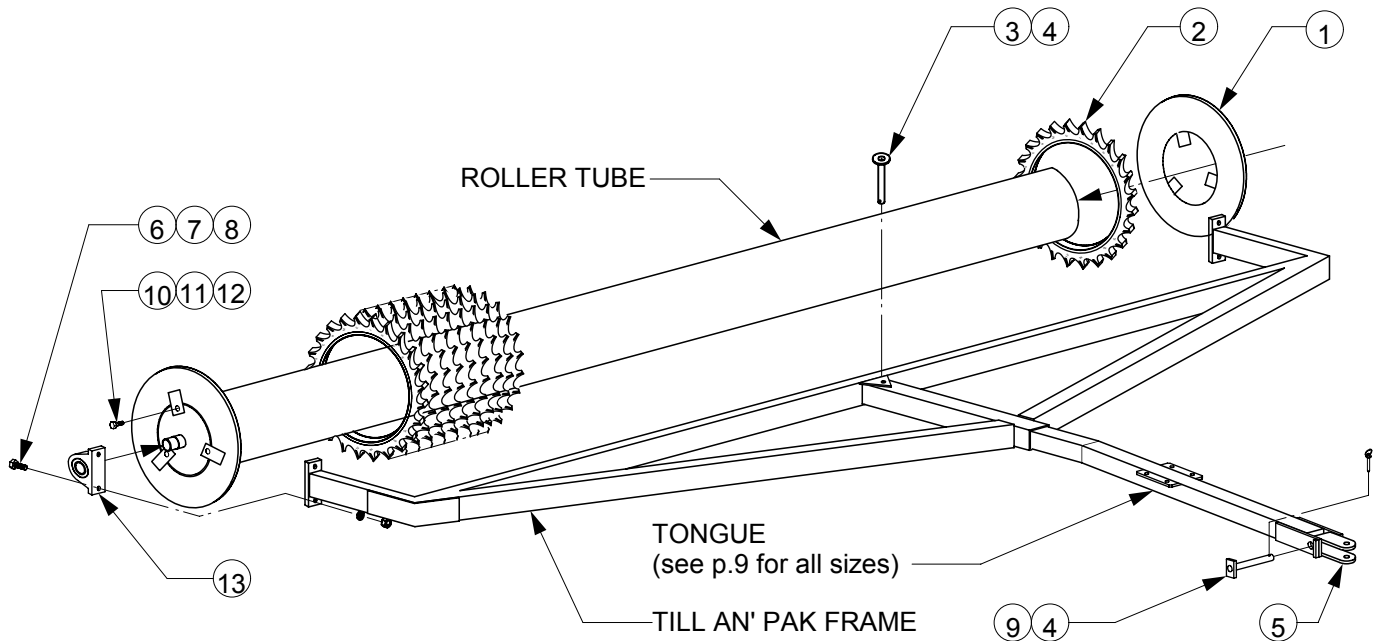
**3-POINT HITCH CATEGORY 1 & 2**

**3-POINT HITCH CATEGORY 2 & 3**

## **SAFETY**

The safe operation of any machinery is an important concern to farmers and manufactures. There are obvious and hidden potential hazards involved in the operation of this implement. Carefully read and follow all safety precautions before operation. Serious injury or death may occur unless care is taken to insure the safety of both the operator and any other persons in the area.

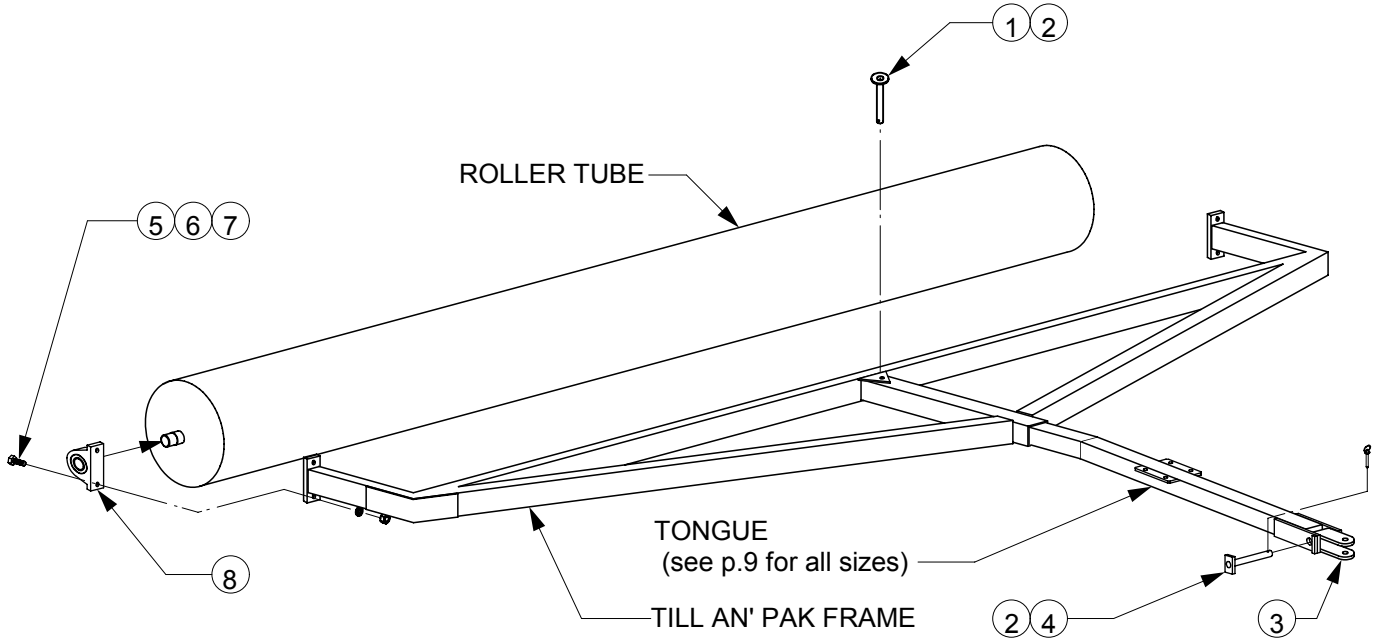
1. Never permit anyone to ride on or walk beside the implement when moving.
2. Never permit anyone to ride on tractor when implement is being moved.
3. When performing operating functions, never allow anyone to be near the implement or the tractor.
4. Do not enter tractor when tractor is moving. Avoid serious injury or death from contact with rotating tires. Enter and exit the tractor only when it is completely stopped.
5. Be sure of water, gas, sewer, or electric line locations before operating implement.
6. When in transport, use accessory lights and devices for adequate warning to operators of other vehicles. Comply with all Federal, State and local laws when traveling on public roads.
7. Use “Slow Moving Vehicle” emblem for warning vehicles approaching from the rear.
8. When transporting, remember that the implement may be wider than your tractor and extreme care must be taken to allow for safe clearance.
9. Never allow inexperienced or untrained personnel to operate the implement or tractor without supervision.
10. When using compressed air to clean implement, wear safety glasses.
11. Check all fasteners for tightness or damage before and after operation. Repair immediately if required.
12. Store implement in a stable position. Insure that safety stands are extended and locked in place before detaching from tractor.



<u>Ref No.</u>	<u>Part No.</u>	<u>Description</u>	<u>Qty. per Roller</u>
1.	-----	Till An' Pak Roller Retainer (See page 7 for all sizes)	2
2.	-----	Till An' Pak Roller Ring (See page 7 for all sizes)	5 / ft.
3.	TPP3010	1-1/8" X 6-1/2" Tongue Pin Weldment	1
4.	GPN-040LYN	1/4" Lynch Pin	2
5.	TPP3020	3" Tongue Clevis Wldm (2 ft to 13 ft units)	1
	TPP3021	3-1/2" Tongue Clevis Wldm (14 ft and up)	1
6.	CSNC508036	1/2" X 2-1/4" NC Cap Screw (2 ft to 15 ft units)	4
	CSNC510040	5/8" X 2-1/2" NC Cap Screw (16 ft and up)	4
7.	LWASHER-08	1/2" Lock Washer (2 ft to 15 ft units)	4
	LWASHER-10	5/8" Lock Washer (16 ft and up)	4
8.	HXNUT-08NC	1/2" NC Hex Nut (2 ft to 15 ft units)	4
	HXNUT-10NC	5/8" NC Hex Nut (16 ft and up)	4
9.	TPP3025	TP Clevis Pin (2 ft to 13 ft units)	1
	TPP3026	TP Clevis Pin (14 ft and up)	1
10.	CBNC510020	5/8" X 1-1/4" NC Carriage Bolt	6
11.	LWASHER-10	5/8" Lock Washer	6
12.	HXNUT-10NC	5/8" NC Hex Nut	6
13.	TPP3150	1-11/16" Pillow Block Bearing (2 ft to 15 ft units)	2
	TPP3155	1-15/16" Pillow Block Bearing (16 ft and up)	2

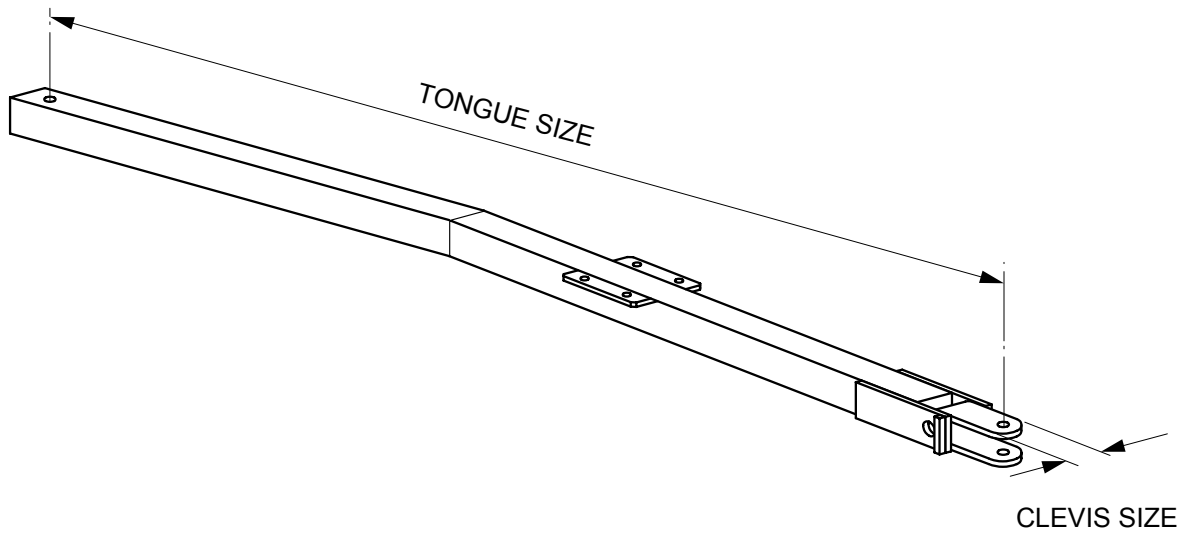


<b>Tube Size</b>	<b>Ring Size ( ID / OD )</b>	<b>Ring Part #</b>	<b>Retainer Size ( ID - OD )</b>	<b>Retainer Part #</b>
8"	10 / 14	TPP3350	8 - 12	TPP3201
8"	12 / 16	TPP3351	8 - 14	TPP3202
8"	12 / 17	TPP3357	8 - 14	TPP3202
8"	13 / 17	TPP3352	8 - 16	TPP3203
8"	14 / 20	TPP3353	8 - 18	TPP3204
8"	16 / 22	TPP3354	8 - 20	TPP3205
10"	12 / 16	TPP3351	10 - 14	TPP3206
10"	12 / 17	TPP3357	10 - 14	TPP3206
10"	13 / 17	TPP3352	10 - 16	TPP3207
10"	14 / 20	TPP3353	10 - 18	TPP3208
10"	16 / 22	TPP3354	10 - 20	TPP3209
12"	14 / 20	TPP3353	12 - 18	TPP3210
12"	16 / 22	TPP3354	12 - 20	TPP3211
14"	16 / 22	TPP3354	14 - 20	TPP3212



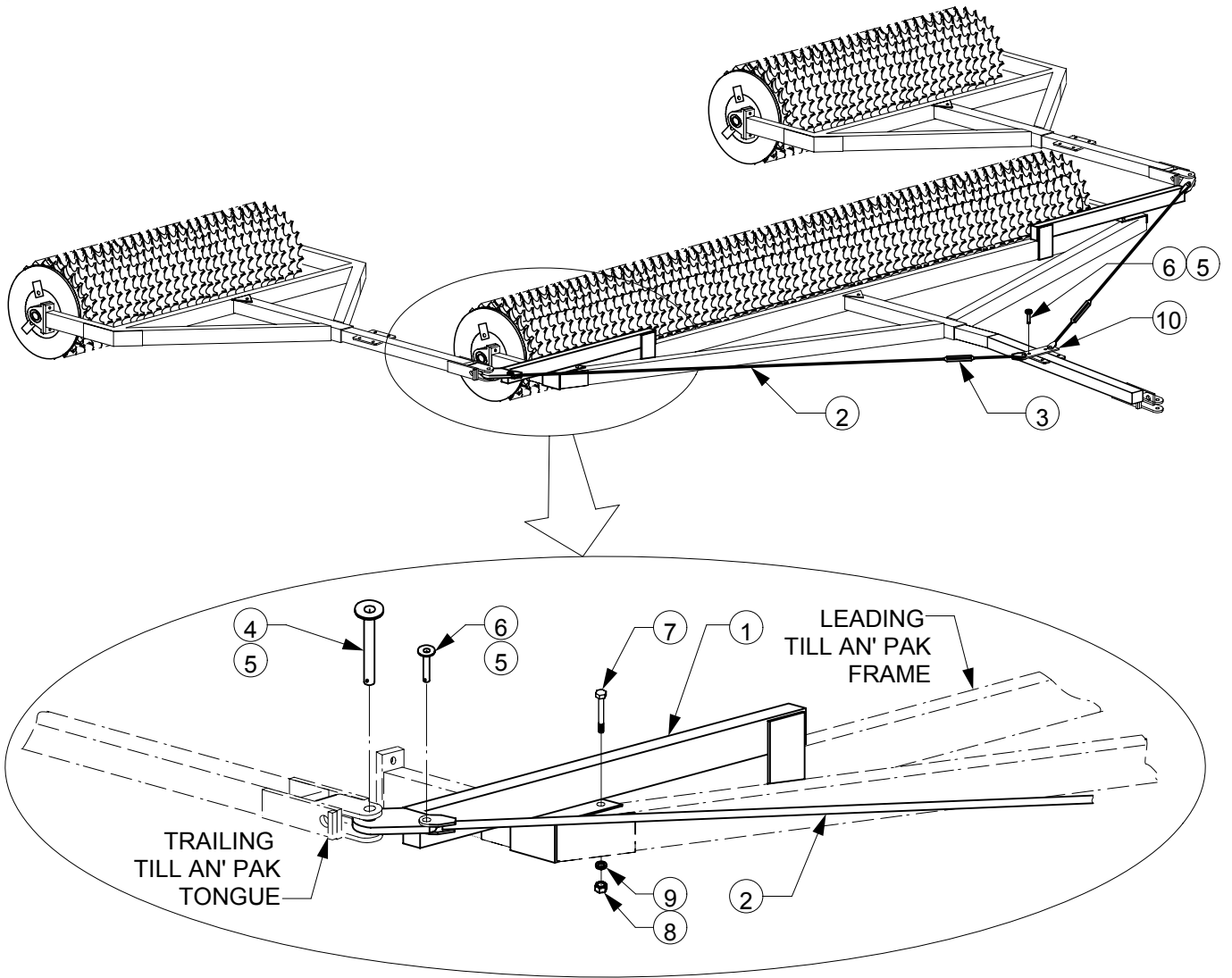
<u>Ref No.</u>	<u>Part No.</u>	<u>Description</u>	<u>Qty. per Roller</u>
1.	TPP3010	1-1/8" X 6-1/2" Tongue Pin Weldment	1
2.	GPN-040LYN	1/4" Lynch Pin	2
3.	TPP3020	3" Tongue Clevis Wldm (2 ft to 13 ft units)	1
	TPP3021	3-1/2" Tongue Clevis Wldm (14 ft and up)	1
4.	TPP3025	TP Clevis Pin (2 ft to 13 ft units)	1
	TPP3026	TP Clevis Pin (14 ft and up)	1
5.	CSNC508036	1/2" X 2-1/4" NC Cap Screw (2 ft to 15 ft units)	4
	CSNC510040	5/8" X 2-1/2" NC Cap Screw (16 ft and up)	4
6.	LWASHER-08	1/2" Lock Washer (2 ft to 15 ft units)	4
	LWASHER-10	5/8" Lock Washer (16 ft and up)	4
7.	HXNUT-08NC	1/2" NC Hex Nut (2 ft to 15 ft units)	4
	HXNUT-10NC	5/8" NC Hex Nut (16 ft and up)	4
8.	TPP3150	1-11/16" Pillow Block Bearing (2 ft to 15 ft units)	2
	TPP3157	1-15/16" Pillow Block Bearing (16 ft and up)	2



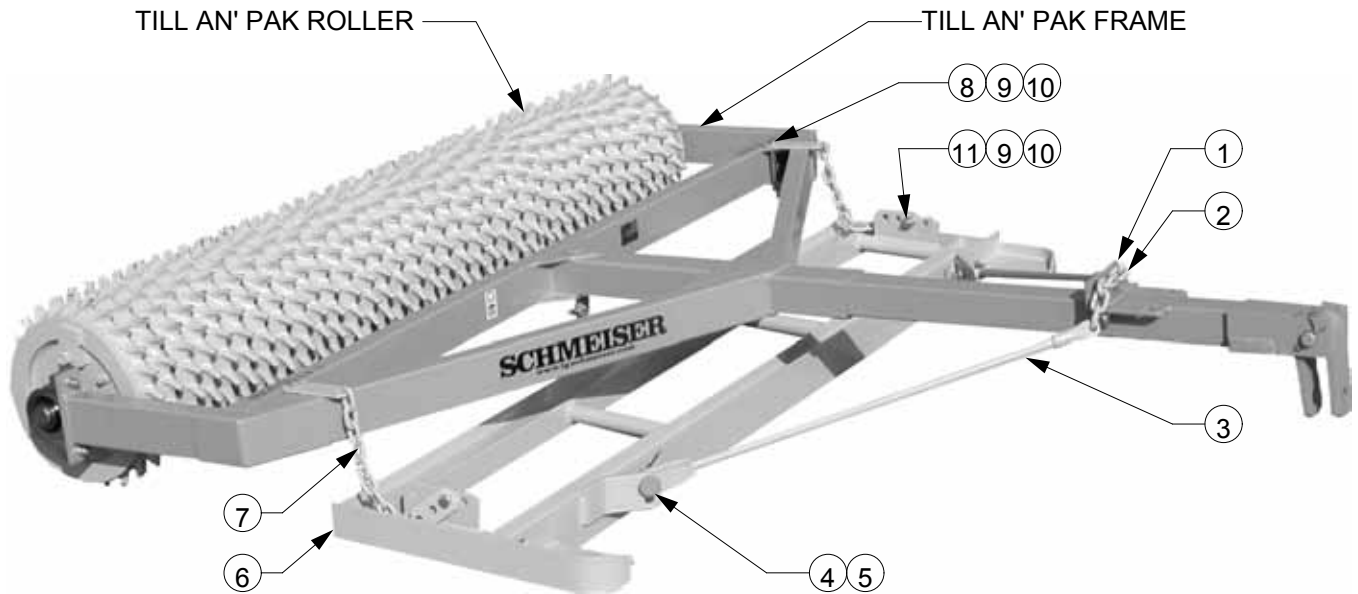


Unit Size	Clevis Size	Tongue Size	Tongue Part #
2' to 5'	3"	52"	TPP3001
6' to 9'	3"	72"	TPP3002
10' to 13'	3"	84"	TPP3003
14' to 18'	3-1/2"	84"	TPP3004
19' to 24'	3-1/2"	100"	TPP3005
19' to 24'	3-1/2"	100" - HD	TPP3005H
25' and Up	3-1/2"	120"	TPP3006
25' and Up	3-1/2"	144"	TPP3007

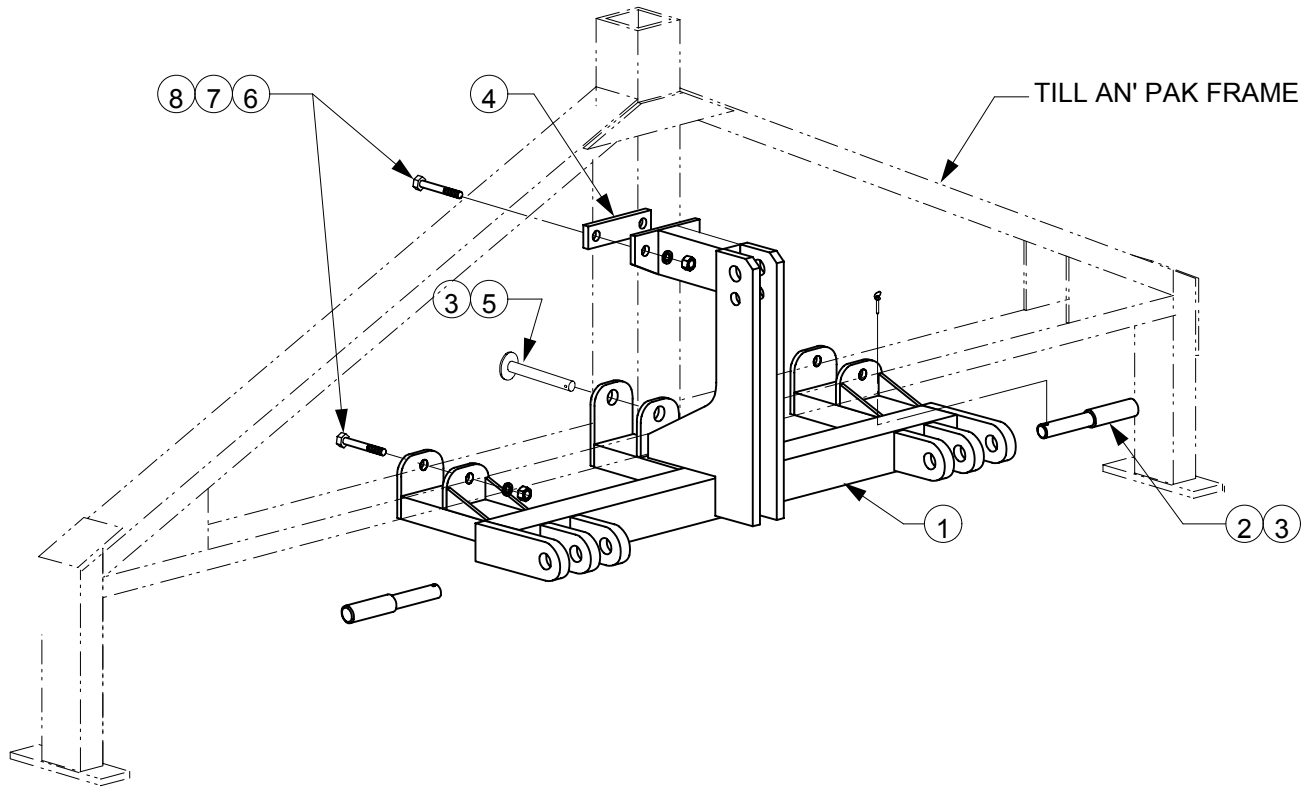
NOTE: 52" and 72" Tongues do not have a bend.



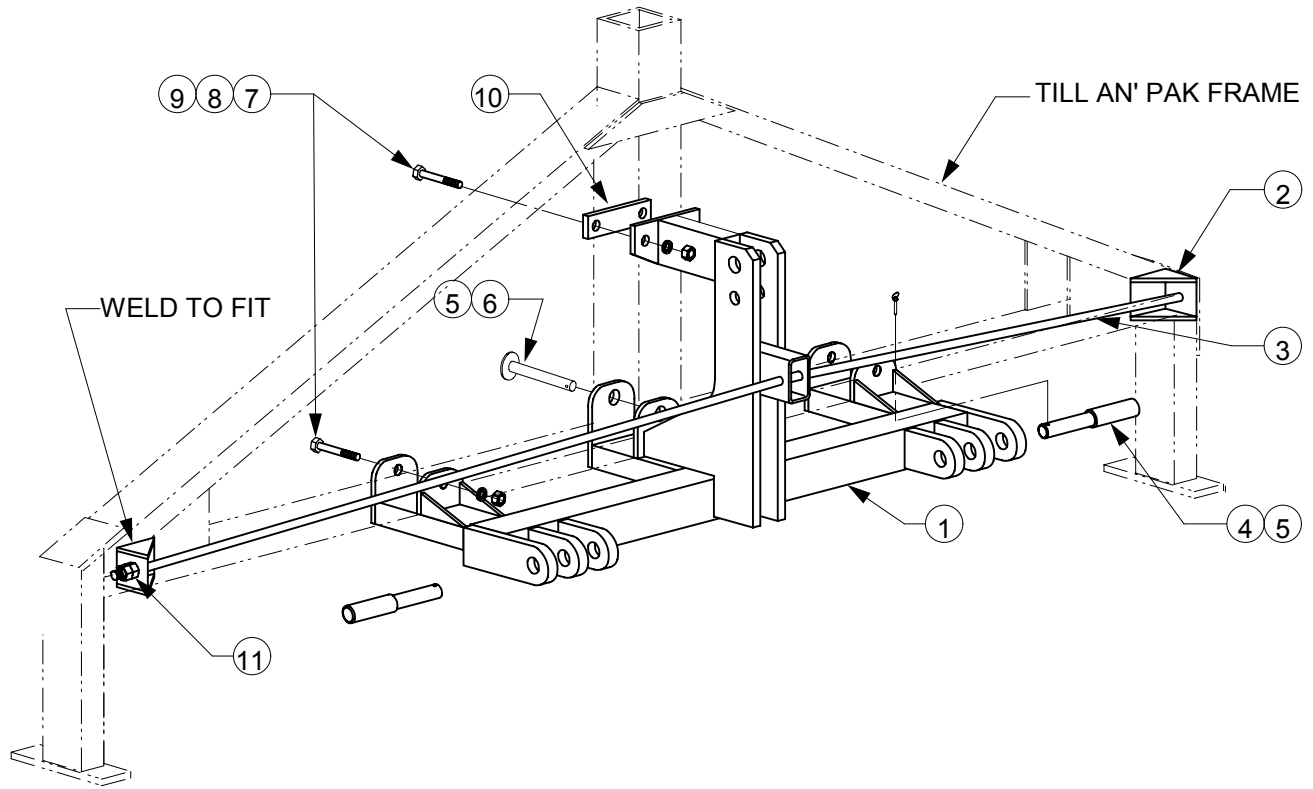
<u>Ref No.</u>	<u>Part No.</u>	<u>Description</u>	<u>Qty.</u>
1.	TPS-(00)D000	Squadron Arms Frame LH and RH (specify size)	1
2.	TPS-00C000	Squadron Arm Turnbuckle Rod Long (specify size)	2
3.	GTB-12X96W	3/4" NC Turnbuckle Assembly Weldment	2
4.	TPP3010	1-1/8" X 6" Till An' Pak Tongue Pin	2
5.	GPN-040LYN	1/4" Lynch Pin	4
6.	GPN-12X040	3/4" X 2-1/2" General Clevis Pin	2
7.	CSNC510088	5/8" X 5-1/2" NC Cap Screw	2
8.	HXNUT-10NC	5/8" NC Hex Nut	2
9.	LWASHER-10	5/8" Lock Washer	2
10.	TPS-00A100	Tie Bar Bridge for 3" Tongues	1
	TPS-00A200	Tie Bar Bridge for 3-1/2" Tongues	1



<u>Ref No.</u>	<u>Part No.</u>	<u>Description</u>	<u>Qty. per Roller</u>
1.	TPF-01A014	Till An' Pak Float Pull Bracket (2 ft. to 13 ft. units)	1
	TPF-02A014	Till An' Pak Float Pull Bracket (14 ft and up)	1
2.	GMB-CH06PC	3/8" Chain Gr.30 Proof Coil	2.33 Ft.
3.	TPF-04B000	Float Rod Weldment for 4 ft. Units	2
	TPF-05B000	Float Rod Weldment for 5 ft. Units	2
	TPF-06B000	Float Rod Weldment for 6 ft. Units	2
	TPF-07B000	Float Rod Weldment for 7 ft. to 12 ft. Units	2
	TPF-13B000	Float Rod Weldment for 13 ft. to 16 ft. Units	2
4.	GPN-12X040	3/4" X 2-1/2" Std. Clevis Pin Weldment	2
5.	GPN-04X40C	1/4" X 2-1/2" Cotter Pin	2
6.	TPF-(00)B000	Till An' Pak Float Main Frame Wldm (specify size)	1
7.	TPF3502	Float Stay Chain	2
8.	CSNC510096	5/8" X 6" NC Cap Screw	2
9.	LWASHER-10	5/8" Lock Washer	6
10.	HXNUT-10NC	5/8" NC Hex Nut	6
11.	CSNC510024	5/8" X 1-1/2" NC Cap Screw	4



<u>Ref No.</u>	<u>Part No.</u>	<u>Description</u>	<u>Qty. per Roller</u>
1.	THS-00A000	HD Hitch Center Frame Weldment	1
2.	GPN-18CA12	Cat. 1 & 2 Pull Pin	2
3.	GPN-040LYN	1/4" Lynch Pin	2
4.	THS-00A014	Clamp Plate	1
5.	TPP3010	1-1/8" x 6" TP Tongue Pin	1
6.	CSNC510112	5/8" X 6" NC Cap Screw	4
7.	LWASHER-10	5/8" Lock Washer	4
8.	HXNUT-10NC	5/8" NC Hex Nut	4



<u>Ref No.</u>	<u>Part No.</u>	<u>Description</u>	<u>Qty. per Roller</u>
1.	THH-00A100	HD Hitch Center Frame Weldment	1
2.	THH-00A200	HD Hitch Truss Rod Mount	2
3.	HRROUND12	3/4" HR Round (specify length)	1
4.	GPN-24CA23	Cat. 2 & 3 Pull Pin	2
5.	GPN-040LYN	1/4" Lynch Pin	2
6.	TPP3010	1-1/8" x 6" TP Tongue Pin	1
7.	CSNC510112	5/8" X 6" NC Cap Screw	4
8.	LWASHER-10	5/8" Lock Washer	4
9.	HXNUT-10NC	5/8" NC Hex Nut	4
10.	THS-00A014	Clamp Plate	1
11.	HXNUT-12NC	3/4" NC Hex Nut	4

# T.G. SCHMEISER CO., INC.®

## Limited Warranty Statement

T. G. Schmeiser Co., Inc. warrants each new Schmeiser® product to be free from defects in material and workmanship. This warranty is applicable only for the normal service life expectancy of the product or components, not to exceed twelve (12) consecutive months from the date of delivery of the new Schmeiser product to the original purchaser.

Genuine T. G. Schmeiser Co., Inc. replacement parts and components will be warranted for 90 days from date of purchase, or the remainder of the original equipment warranty period, whichever is longer.

Under no circumstances will it cover any merchandise or components thereof, which, in the opinion of the company, has been subjected to misuse, unauthorized modifications, alteration, an accident or if repairs have been made with parts other than those obtainable through T. G. Schmeiser Co., Inc.

The Company in no way warrants engines, batteries, cylinders, tires or other trade accessories since these items are warranted separately by their respective manufacturer. Expendable components such as points, shanks, blades, rings, bearings, teeth, and the like are excluded from this warranty.

Our obligation under this warranty shall be limited to repairing or replacing, free of charge to the original purchaser, any part that, in our judgment, shall show evidence of such defect, provided further that such part shall be returned within thirty (30) days from date of failure to T. G. Schmeiser Co., Inc., routed through the dealer and distributor from whom the purchase was made, transportation charges prepaid.

This warranty shall not be interpreted to render T. G. Schmeiser Co., Inc. liable for injury or damages of any kind or nature to person or property. This warranty does not extend to the loss of crops, loss because of delay in harvesting, or any expense or loss incurred for labor, substitute machinery, rental or for any other reason.

Except as set forth above, **T. G. Schmeiser Co., Inc. shall have no obligation or liability of any kind on account of any of its equipment and shall not be liable for special or consequential damages. T. G. Schmeiser Co., Inc. makes no other warranty, expressed or implied, and, specifically, T. G. Schmeiser Co., Inc. disclaims any implied warranty or merchantability or fitness for a particular purpose. Some states or provinces do not permit limitations or exclusions of implied warranties or incidental or consequential damages, so the limitations or exclusion in this warranty may not apply.**

This warranty is subject to any existing conditions of supply, which may directly affect our ability to obtain materials or manufacture replacement parts.

T. G. Schmeiser Co., Inc. reserves the right to make improvements in design or changes in specifications at any time, without incurring any obligation to owners of units previously sold.

No one is authorized to alter, modify or enlarge this warranty nor the exclusion, limitations and reservations.

**WARRANTY VOID IF NOT REGISTERED  
WITHIN 30 DAYS OF PURCHASE DATE**

**Schmeiser Till An' Pak / Smooth An' Roll  
Maintenance & Repair Record**

<b>Date of Service</b>	<b>Service or Repair Performed</b>	<b>Parts Replaced</b>

# Notes

A large rectangular area with a black border, containing 18 horizontal gray bars alternating with white space, intended for writing notes.